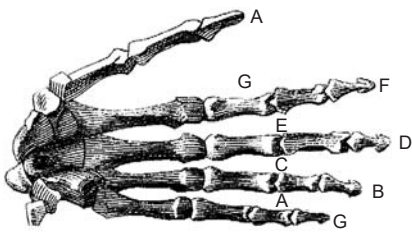


CHAPTER 16 STUDY GUIDE

1. What letter did the bass clef used to be? 1. F
2. Which staff line goes between the two dots of the bass clef? 2. 4th
3. Which line is the bass clef head on? 3. 4th
4. What letter name does the bass clef give to the fourth line? 4. F
5. On a scratch piece of paper, draw a dozen bass clefs. Don't forget the dots! 5. try it slow and perfect and fast and messy.
6. What are the names of the bass clef lines? 6. G B D F A
7. What are the names of the bass clef spaces? 7. A C E G
8. What is another name for the bass clef? 8. F Clef
9. What are your mnemonic devices to remember the bass clef lines and spaces? 9. The wackier the better.

PRACTICAL USE EXERCISES

1. Again with the hand. Left hand this time, palm facing you (you're using the left hand because that's the bass hand when you play piano). Pretend your hand is the bass clef staff. Name the fingers and "valleys" between your fingers using the bass clef note names.



2. On the staves below draw some bass clefs. Write in the letter names for the lines and spaces. Name two high leger lines, and two low ones (don't forget to name the spaces between the leger lines).
