

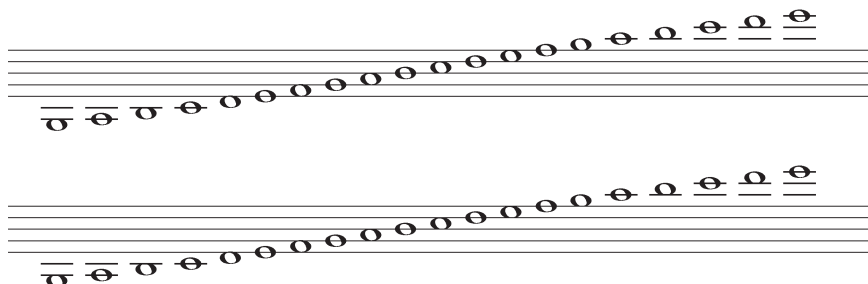
---

## CHAPTER 13 STUDY GUIDE

1. What letters are used to name notes in music?  
1. A B C D E F G
2. What letter comes after G in the musical alphabet?  
2. A
3. What kind of note comes right before or after a space note?  
3. A line note
4. What kind of note comes right before or after a line note?  
4. A space note
5. Do leger line notes above and below the staff use a different naming system?  
5. No
6. What letter comes before A in the musical alphabet?  
6. G

## PRACTICAL USE EXERCISES

1. Say the letters A-G in a repeated loop as fast as you can. Do the same thing backwards. Say every other letter: A, C, E, G, B etc. Say every other letter, but start with B. Say every third letter until you've said them all. Every fourth. Every fifth.
2. Write out the letter names under the notes on the staves below. Start the first one on the left with a low G and work to the right. Start from the right on the second example, with a high G and work backwards toward the left. In what specific way are the two systems of lettering different?
3. Choose a meter, then write out whole, half, quarter, eighth and sixteenth notes on the blank staves below, with bar lines placed correctly. Use one (or both) of these two systems of naming notes to name the notes you've written.



Blank musical staves for writing exercises.